

# KOMET® KONNECT

IPR Starter Kit LD0528

By Dr. Jerry Gildner

Retail: \$268



## Change The Way You Think About IPR New OS Oscillating Segment Instruments

The IPR Starter Kit by Dr. Jerry Gildner contains six hand-selected instruments for optimal interproximal enamel reduction. Featuring both single- and double-sided OS discs along with two single-sided "contact breakers," the kit offers an uncomplicated IPR procedure that protects adjacent tooth structure. Start the process with the appropriate contact breaker, and then follow up with the necessary OS instruments for optimal, predictable results every time.

Call 888-KOMET-USA to receive  
step-by-step demo from your  
Komet representative



Order Number: OS30  
handpiece sold separately  
Retail \$1199\*

"I have found the Gildner IPR Kit to be a tremendous asset when doing interproximal tooth reduction for clear aligner therapy orthodontics. The handpiece and properly shaped abrasive discs make access and reduction easier and more controllable in tight crowded contact areas. In addition I find the Kit to be a valuable asset in esthetic reshaping and recontouring of worn and chipped teeth."

Steven R. Hein DDS, Green Bay WI

"Before using KOMET's IPR kit, I dreaded interproximal reductions on my Invisalign® cases. Now, I can complete IPR quickly and with complete patient comfort. The precision I have with the Gildner IPR kit from KOMET USA provides the best and most predictable results. This kit makes IPR a breeze."

Nicholas Romenesko DDS, Brillion, WI

\*Three installments of \$475 available with approved credit application with the purchase of a KOMET OS30 handpiece and kit. Retail on both \$1,467.

8



step 1

A 32-year-old female patient presents for orthodontic evaluation. Her chief complaints are crowding and esthetics. She is unwilling to pursue conventional orthodontics. A treatment plan is developed to address the clinical concerns of crowding, esthetics, protruding lower incisors, and gingival recession. Treatment begins with 3 months of arch development prior to the Invisalign® phase.



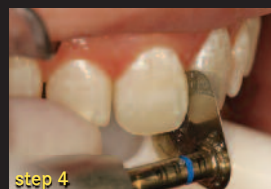
step 2

If desired, insert a wooden wedge as pictured to help protect the gingival tissue.



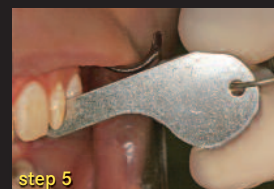
step 3

Select the appropriate single-sided contact breaker that allows straight-line access to the contact. Position the OS30 handpiece so a finger rest can be achieved. Interference with teeth or oral structures by the head of the handpiece must be avoided. **Important: Maintain the instrument position OS30 that is perpendicular to the contact point and parallel to the long axis of the contact.**



step 4

Accelerate the OS30 oscillating contra-angle handpiece to full speed (5,000 oscillations) before contact is engaged. Use gentle, intermittent, apical pressure until contact is fully reduced.



step 5

Verify the width of the cut, and then use the OS20FH honeycomb instrument to continue with the interproximal reduction.



step 6

Due to the flexible honeycomb construction of the OS discs, natural anatomical embrasure spaces are easily attained.



step 7

After completing final anatomical contouring, finishing, and polishing, use the 4564 KOMET® Composite Polishing System. Shown here is medium grit section of strip CS40. Next, move on to fine grit section of same strip CS40.



step 8

Use the ultra-fine grit section of the strip CS40 to finalize polishing.



step 9

Apply in-office topical fluoride per manufacturer instructions.



step 10

Following IPR treatment with the Gildner Kit, the patient's teeth exhibit normal tooth contours and natural anatomy far beyond that possible with standard discs or strips.