

KOMET® KONNECT

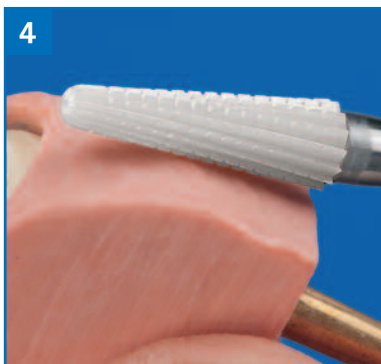
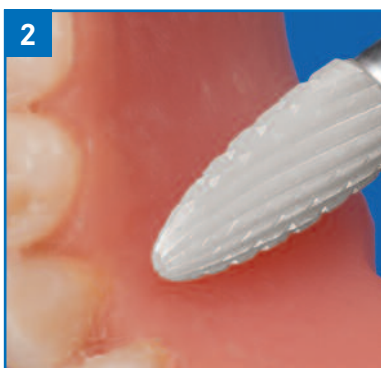
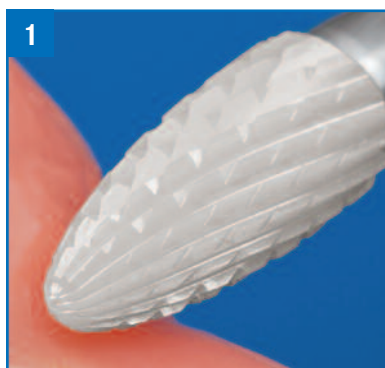
KOMET® Ceramic Cutters for Acrylics

KOMET® ceramic lab cutters feature heads fabricated of a durable, high-performance ceramic, allowing acrylic materials to be precisely shaped, trimmed, and cut without generating the heat of traditional titanium carbide cutters and without material deformation, melting, or discoloration. Because these cutters resist heat build-up, the operator reduces the risk of burn injuries when changing the instrument.

These high-performance cutters are specially constructed to eliminate clogging during use. Offered in two configurations—tapered (K79GSQ.104.040) and convex-shaped (K251ACR.104.060).



10

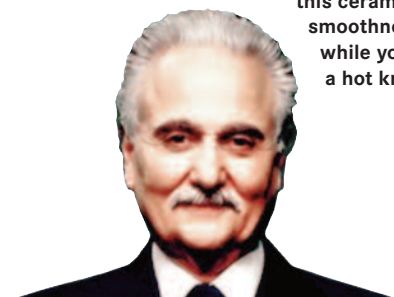


GSQ
K79GSQ.HP.040 \$55.00

ACR
K251ACR.HP.060 \$55.00

“When I used KOMET’s ceramic lab bur, I was amazed at how smooth it cuts acrylics and soft liners. It was unique in that it didn’t collect debris in its flutes. With this ceramic bur, you can feel the smoothness of its cutting action while you use it. It’s like using a hot knife on butter.”

Dr. Joe Massad, Tulsa, OK



Buy 6, Get 1 Free • Buy 12, Get 3 Free